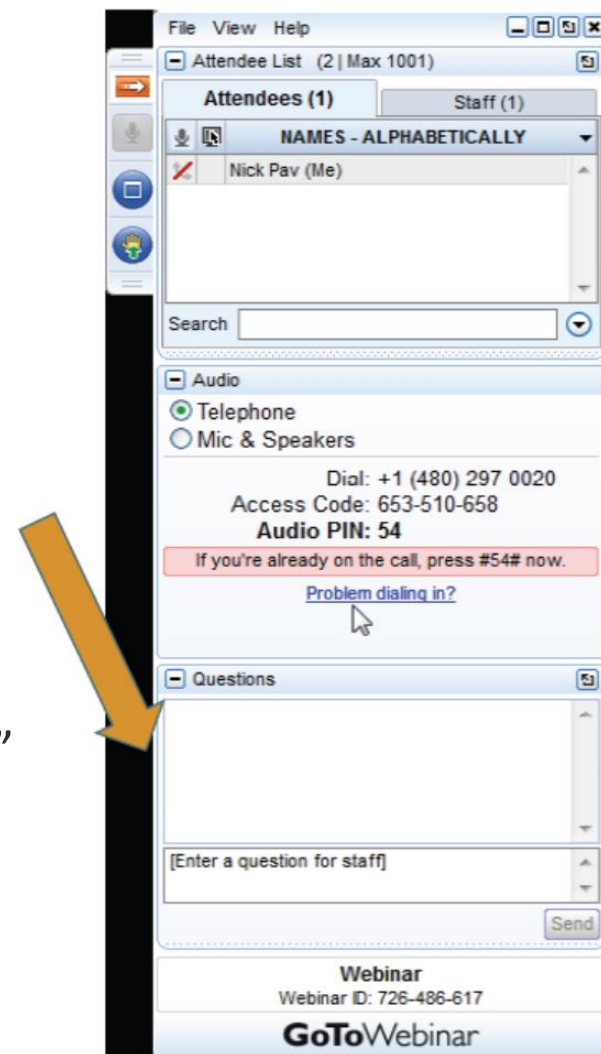


Increasing Access to Emergency Child Care Bridge Program

Logistics

- Webinars are recorded and archived at <http://kids-alliance.org/webinars/>
- If you experience technical difficulties email Shanti Ezrine at s.ezrine@kids-alliance.org
- Slides and certificate of participation will be posted at <http://kids-alliance.org/webinars/>
- All attendees are muted
- Please submit questions using the “Questions” function on your GotoWebinar dashboard



Today's Speakers

- **Domenica Benitez**, Director of Provider Services, California Child Care Resource & Referral Network
- **Michael Fleming**, Resource Family
- **Susanna Kniffen**, Senior Director Child Welfare, Children Now
- **Lodia Ruiz**, Foster Care Bridge Program Manager
- **Tracy Urban**, California Department of Social Services
- **Andria Zaverl, M.A.**, Research Manager, Child Care Resource Center

Agenda

Caregiver Experience with the Emergency Child Care Bridge Program

Overview of the Emergency Child Care Bridge Program

State Data and Strategies

Child Care Pilot Lessons Learned

R&R Network Role in Trauma-Informed Care Training and Navigators

San Diego Implementation and Best Practices

Emergency Child Care Bridge Expansion Budget Proposal

Q&A

A CAREGIVER'S PERSPECTIVE

Experience with the Emergency Child Care Bridge Program



Emergency Child Care Bridge Program for Foster Children

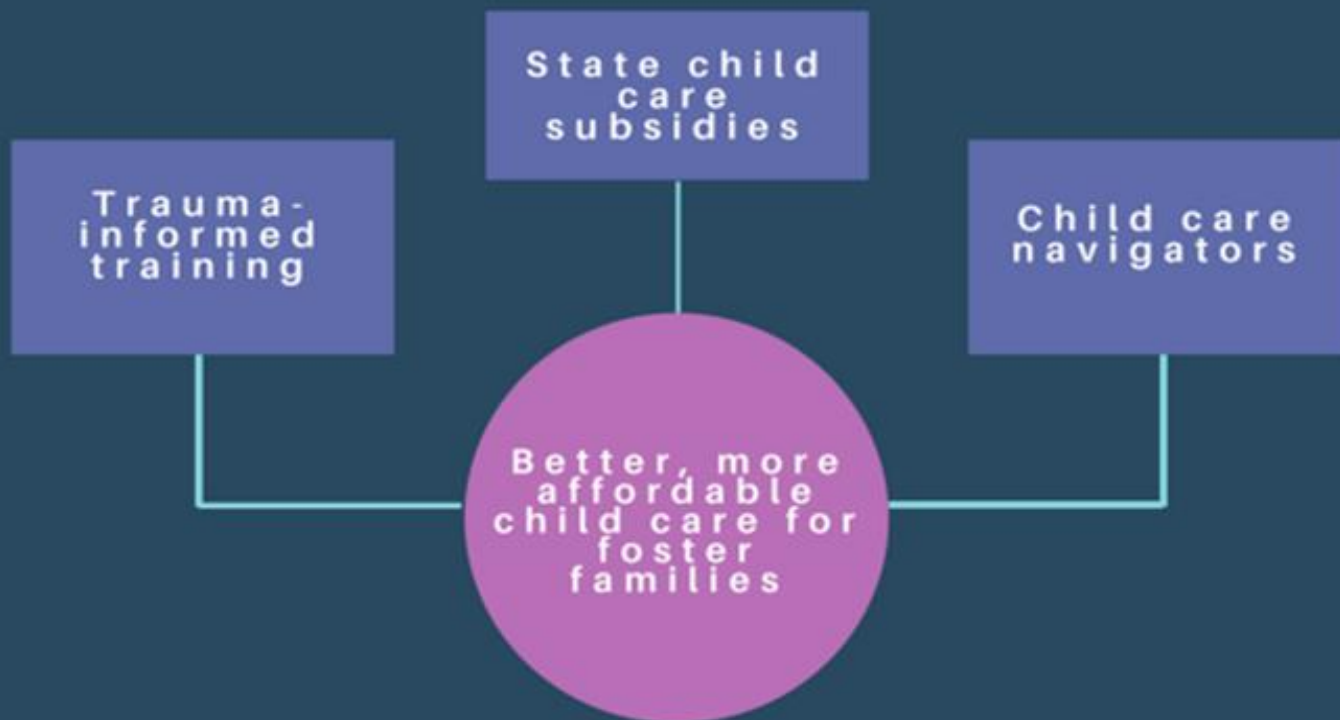


Program Goals

- Increase the number of foster children successfully placed in home-based family care.
- Increase capacity of child care programs to meet the needs of foster children in their care.
- Maximize and leverage funding to support the child care needs of foster families.

Program Purpose

- Stabilizing foster children with families at the time of placement by providing a time-limited payment or voucher for child care following the child's placement, or for a child whose parent is in foster care.
- Providing the family with a child care navigator to assist the family in accessing longer-term subsidized child care.
- Trauma-informed training for child care providers serving foster care children.



The emergency child care bridge

A three-pronged approach

First Component: Child Care Voucher

Families Eligible for the Bridge Program include:

- Approved resource families, and families that have a child placed with them in an emergency or for a compelling reason.
- Prior to January 1, 2021, licensed foster family homes or certified family homes.
- Prior to January 1, 2021, approved homes of relatives, or nonrelative extended family members.
- Parents under the jurisdiction of the juvenile court, including, but not limited to, non-minor dependent parents.

Second Component: **Child Care Navigator**

The Navigator assists with the following:

- Finding a child care provider,
- Securing a subsidized child care placement (if eligible),
- Completing child care program applications, and
- Developing a plan for long-term child care appropriate to the child's age and needs.

Third Component:

Trauma Informed Training & Coaching

- Bridge Program Child care providers will receive access to trauma-informed care training and coaching.
- This is intended to help child care providers learn strategies for working with children who have experienced trauma.
- The local R&R Program is responsible for providing trauma-informed care training and coaching to child care providers in their communities.
- The California Child Care Resource and Referral Network (Network) developed and coordinates the training content to be used by all participating local R&R Programs.

Funding

- \$15.5 million (January-June 2018)
- \$31 million ongoing
 - 71% Vouchers
 - 16% Navigator
 - 13% Training

Program Administration

- 42 counties opted in January –June 2018.
- 46 counties opted in FY 2018-19.
- ACL 19-18 released to opt in for FY 2019-20, 2020-21.
- County plans due March 29, 2019.

Preliminary Data FY 2017-18

Children receiving child care with a Bridge Program Voucher:

Ages 0-2	496
Ages 3-5	318
Ages 6-12	232
Ages 13-21	0
Total	1046

Preliminary Data FY 2017-18

Type of Child Welfare Placement:

Resource Family	305
Emergency/Compelling Reason	251
Certified/Licensed Foster Parent	224
Approved Relative/NREFM	227
Parenting Youth	97

Preliminary Data FY 2017-18

Selected Child Care Setting:

Licensed Center	344
Family Daycare Home	645
Licensed Exempt Provider	121

*Data compiled from CCB 18 submissions.

Next Steps

Site Visits

Regulations

Data

Continuity Considerations

Trustline

After Bridge child care transitions

Successes! 😊



Contact Information

Program:

ChildCareBridge@dss.ca.gov

Data (CCB 18):

admccb18@dss.ca.gov

Fiscal:

Fiscal.systems@dss.ca.gov

California Resource & Referral Network:

<https://rrnetwork.org/>

AT THE INTERSECTION OF CHILD WELFARE AND EARLY CARE AND EDUCATION

OUTCOMES AND LESSONS FROM A PILOT

SUSAN SAVAGE, PH.D. & ANDRIA ZAVERL, M.A.



DAVID SANTIAGO GARCIA/AURORA PHOTOS

GOALS OF CHILD WELFARE AND EARLY CARE AND EDUCATION (ECE)

Child Welfare

- Safety
 - All children have the right to live in an environment free from abuse and neglect.
- Permanency
 - Children need a family and a permanent place to call home.
- Child and Family Well-Being
 - Children deserve nurturing environments in which their physical, emotional, educational, and social needs are met.

<https://training.cfsrportal.acf.hhs.gov/book/export/html/2987>

Early Care and Education

- The mission of the federal Office of Child Care, under the Administration for Children and Families (ACF) is to support “low-income working families by improving **access** to affordable, **high-quality** early care and afterschool programs.”

<https://www.acf.hhs.gov/occ/fact-sheet-occ>

GOALS OF CHILD WELFARE AND EARLY CARE AND EDUCATION (ECE)

Child Welfare & ECE together

- Safety
 - Observing and responding to early warning signs of child abuse or neglect, or other child-related risk factors for abuse such as developmental delays, socioemotional and behavioral issues, and health issues
- Permanency
 - Provide stable, caring access points for children and parents/caregivers to child and family support services
- Child and Family Well-Being
 - Promoting the socioemotional development and school readiness of children most at-risk for academic delays and poor psychosocial development, and providing and facilitating stable and responsive relationships with caring adults

From the Advancement Project: <http://file.lacounty.gov/SDSInter/bos/supdocs/77132.pdf>

ESTABLISHING A COLLABORATIVE PARTNERSHIP BETWEEN TWO TYPICALLY SILOED SYSTEMS

LESSONS FROM COLLABORATION

1. Important to learn and understand each other's goals
2. Making time to learn each other's language, and culture is crucial
 - Terms like “Emergency,” “Provider,” and “Caregiver”
3. Relationship building must be a priority and it takes TIME
4. Even if it seems there isn't anything to discuss, keeping regularly scheduled check-in meetings with partners is essential

GOALS: PERMANENCY & ACCESS

GOALS: PERMANENCY & ACCESS

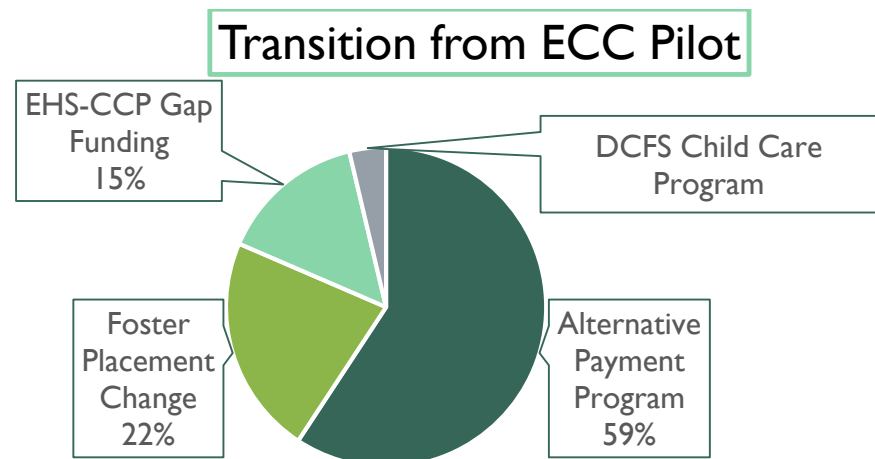
Lessons Learned

- Child
 - ❑ 4 months – average length of time in Emergency Child Care pilot
 - ❑ Majority (59%) of children transitioned to Alternative Payment Program
- Resource Parent
 - ❑ Often not eligible for other subsidized programs (undocumented, income eligibility, hours of program like Head Start do not meet parents' needs)
 - ❑ County discretion for job search eligibility can lead to lack support if Resource Parent loses their job
- Child Care Navigator
 - ❑ Case load - Smaller case loads are needed for CCN to find subsidized funding

GOALS: PERMANENCY & ACCESS CONT.

Lessons Learned

- Finding subsidized funding was challenging and will only become more difficult (which will lead to instability)
- Foster children can be in temporary or unstable placements (which leads to instability for the child)
 - 22% experienced foster placement changes
 - On path to reunification with bio parent
 - CCN case load & case turnover rates



GOALS: PERMANENCY & ACCESS CONT.

Lessons Learned

- Currently limited support for biological parents after reunification
- CDN-CCRC Data found a majority of children in the Child Welfare system were funded by CalWORKS Stage 1, 2, or 3
 - ❑ Stage 1 child care contractors could be a needed partner
 - ❑ Would CalWORKS Home Visiting program act as a prevention intervention for this population?



Of children who experience both CW & ECE

- 62% first served by CPS
- 83% first served as infants/toddlers
- 61% enrolled in CalWORKS Stage 1, 2 or 3 child care
- 22% enrolled in Alternative Payment or similar (FCCHEN)
- 19% enrolled in Early Head Start/Head Start

GOALS: WELL-BEING & QUALITY

GOALS: WELL-BEING & QUALITY

Lessons Learned

■ Child Care Navigator

- ❑ Multidisciplinary Team was critical to meeting the needs of the child and family

■ Resource Parents

- ❑ Reduction in stress

Data Element	ECC Pilot	CCRC Bridge
Average number of days between a referral and child attend child care	12 days	9 days

- ❑ Certain parents need more support (relatives – Grandparents and Parenting Teens)

ECC pilot, “allowed me to be able to return to work. The navigator’s professionalism relieved my stress.”
-Resource Parent

RESOURCE PARENT PERSPECTIVE

“The waiting process and paperwork were a bit strenuous. Having to have forms signed by your employer and school was sometimes hard to get. With that came questioning from employer about forms and having to disclose my situation was not ideal. Sometimes there are personal things you don't want to discuss with employer. Other than that the program was great.”

– Resource Parent

GOALS: WELL-BEING & QUALITY

Lessons Learned

- Providers welcome Trauma-Informed Care (TIC) training and want more of it!
 - ❑ Managing Challenging Behaviors
 - ❑ Self-Care for Child Care Providers
 - ❑ Working with Parents
- Training increases initial knowledge; however coaching is critical to change providers' behaviors.
- Cohort learning – Research shows that cohort learning improves provider and parent relationship and quality (Bromer et al., 2009)
- Trainings must also be offered in relevant languages to the community
 - ❑ It is challenging to translate materials and coordinate logistics for delivering training

“It has helped increase my knowledge. Different types of trauma, problems with behavior, I learned how the brain works. The reflection classes helped me understand the children’s behavior and how to help them, and myself.”
– ECC Pilot Child Care Provider

GOALS: SAFETY

GOALS: SAFETY

Lessons Learned

- Child Care Provider is an added resource to observe and respond to early warning signs
 - Strong communication between Child Care Navigator, Child Care Provider, and CSW is essential
 - Child Care Provider training should include communication with Resource Parent and CSW
- While CCN tries their best to refer providers of quality, it is still the Resource Parent's choice

FUTURE PROGRAM CONSIDERATIONS

- Children Served: CW children vs ECE children
 - How do we strengthen our collaboration to better serve our families?
- Bridge to What?
 - Limited funding will always make transition to subsidized funding challenging
 - Ensuring full eligibility review is critical to transferring to new funding, BUT is this resourced enough for staff to do this well?
 - What happens to the permanency and well-being of the child when after reunification with their biological parent if they have no child care?

FUTURE PROGRAM CONSIDERATIONS

Continued:

- Data

- ☐ Currently only see the middle slice of these children's lives. There is no connection to before the referral or after program or reunification. This will reduce our ability to understand upstream implications or downstream outcomes

- Current Regulations

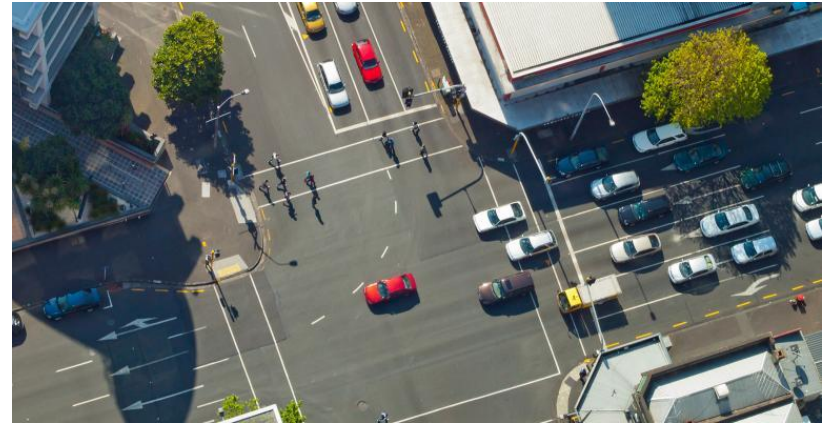
- ☐ County discretion for job search edibility has potential to limit services for children and families
- ☐ Can R&Rs prioritize high quality programs in referrals (QRIS, EHS-CCP, FCCHEN)

“The program helped us tremendously. As you know I fostered a child and I am the aunt to the child. When I was given the foster child it was within hours that I got him from the time they called and I had no day care and that was hard on us. It was all so sudden and I know that it is a constant struggle for foster parents when they randomly receive a child and they have no child care and are not able to work. For us it was a gift from God and we are grateful for the program. It took a load off our back. It helped us continue our normal lives as it was before fostering and we cannot stress enough how grateful we are for the program.” – Resource Parent

QUESTIONS?

Susan Savage, Ph.D.
ssavage@ccrcca.org
818-717-1040
Director of Research

Andria Zaverl, M.A.
azaverl@ccrcca.org
818-717-1000, ext. 8102
Research Manager



<https://www.electronicdesign.com/industrial-automation/robust-traffic-and-intersection-monitoring-using-millimeter-wave-sensors>

THANK YOU!



TRAUMA INFORMED CARE TRAINING & COACHING

California Child Care Resource & Referral



The Network Role of providing Trauma Informed Care Training & Coaching for the
the Emergency Child Care Bridge for Foster Children



- 1. EMERGENCY CHILD CARE VOUCHER (6-12 MONTHS) MAXIMIZES FUNDING TO SUPPORT THE CHILD CARE NEEDS OF ELIGIBLE FAMILIES (AP)**
- 2. CHILD CARE NAVIGATOR HELPS TO INCREASE THE NUMBER OF FOSTER CHILDREN SUCCESSFULLY PLACED IN HOME-BASED FAMILY CARE SETTINGS (R&R)**
- 3. TRAUMA-INFORMED CARE TRAINING AND COACHING WILL INCREASE CAPACITY OF CHILD CARE PROVIDERS TO MEET THE NEEDS OF FOSTER CHILDREN IN THEIR CARE (R&R)**

THE R&R NETWORK

- PROVIDES TRAINING OF TRAINERS & SUPPORT FOR ALL LOCAL R&RS
- IS THE LEAD TRAINING ORGANIZATION FOR THE TIC COMPONENT OF THE BRIDGE PROGRAM
- BUILDS THE CAPACITY OF R&R TEAMS TO SUPPORT THEIR COMMUNITIES

TIC SUPPORT

- **MONTHLY TIC TA WEBINARS & E-NEWSLETTERS**
- **ACESCONNECTION.COM COMMUNITY FOR BRIDGE PROGRAM TEAMS, PROVIDERS, AND COUNTIES**
- **PROVIDED 4 REGIONAL COMMUNITIES OF PRACTICE IN 2018**
- **LAUNCHED FIRST TIC TRAINERS COHORT IN 2018**



**TRAUMA INFORMED CARE
TRAINING & COACHING**

TRAINING MODULES

- **UNDERSTANDING THE IMPACT OF TRAUMA & IDENTIFYING STRATEGIES TO PROMOTE HEALING**
- **HISTORICAL AND INTERGENERATIONAL TRAUMA ON FAMILY DYNAMICS**
- **ENHANCING CAREGIVER RESILIENCY**
- **COACHING CAREGIVERS**

TIC COHORT OBJECTIVES

- SHARE A DEFINITION OF TRAUMA (ACROSS AGENCIES & POSITIONS).
- CONNECT THE IDEA OF TRAUMA RESPONSE TO BEHAVIOR.
- PRACTICE STRATEGIES THAT DEMONSTRATE SAFETY & ENHANCE RESILIENCY ACROSS THE CAREGIVING TEAM.
- EXPLAIN IMPACT OF HISTORICAL & INTERGENERATIONAL TRAUMA ON FAMILY SYSTEMS.
- ENHANCE TRAINING, FACILITATION, & COACHING METHODS FOR INSTRUCTIONAL & PRACTICAL DELIVERY OF COURSE MATERIAL.
- DEVELOP HOLISTIC, BEHAVIORALLY-BASED SELF-CARE PLANS.
- ADDRESS ONGOING CHALLENGES AND SUCCESSES WITH IMPLEMENTATION OF INTER & CROSS-AGENCY TRAUMA INFORMED PRACTICES.

CURRICULA IS DESIGNED TO MEET IV-E REQUIREMENTS

R&R NAVIGATORS

- **MONTHLY TA CALLS**
- **LIAISON BETWEEN CDSS & R&RS**
- **PROFESSIONAL DEVELOPMENT OPPORTUNITIES VIA NETWORK/CAPPA ANNUAL CONFERENCE, STRENGTHENING FAMILIES, AND TIC**



TRAUMA INFORMED CARE TRAINING & COACHING

WWW.RRNETWORK.ORG

DOMENICA BENITEZ,
DIRECTOR OF PROVIDER SVCS.
DBENITEZ@RRNETWORK.ORG

CHARLOTTE WILLIAMS, LCSW
TIC TRAINING & COACHING MANGER
CWILLIAMS@RRNETWORK.ORG

KELLY GRAESCH
DIRECTOR OF MEMBER SVCS.
KGRAESCH@RRNETWORK.ORG

FOR A SUMMARY OF 2018 ROLL OUT, VISIT:
[HTTPS://PREZI.COM/VIEW/J00EBBLE2GGYASAZJBNR/](https://PREZI.COM/VIEW/J00EBBLE2GGYASAZJBNR/)

California Child Care Resource & Referral





San Diego County Emergency Child Care Bridge Program for Foster Children



About us

YMCA Childcare Resource Service was established in 1980 as the state funded child care resource and referral agency for San Diego County.

Our programs include:

Resource
& Referral

Alternative
Payment
Program

CalWorks Stage 1

Field Services

Emergency Child
Care Bridge
Program

About us

- Started in June 2018
- Processed our first voucher in July 2018
- Staffing
 - 1 Full time Navigator/ Program Manager
 - 1 Full time Navigator
 - 2 Trainers/Coaches
 - 1 Full time Family Advocate through the Alternative payments department

About Emergency Child Care Bridge program

Child Care Navigator providing enhanced referral search for children in foster care

Emergency child care vouchers

Trauma informed trainings and one on one coaching support to providers



Eligibility

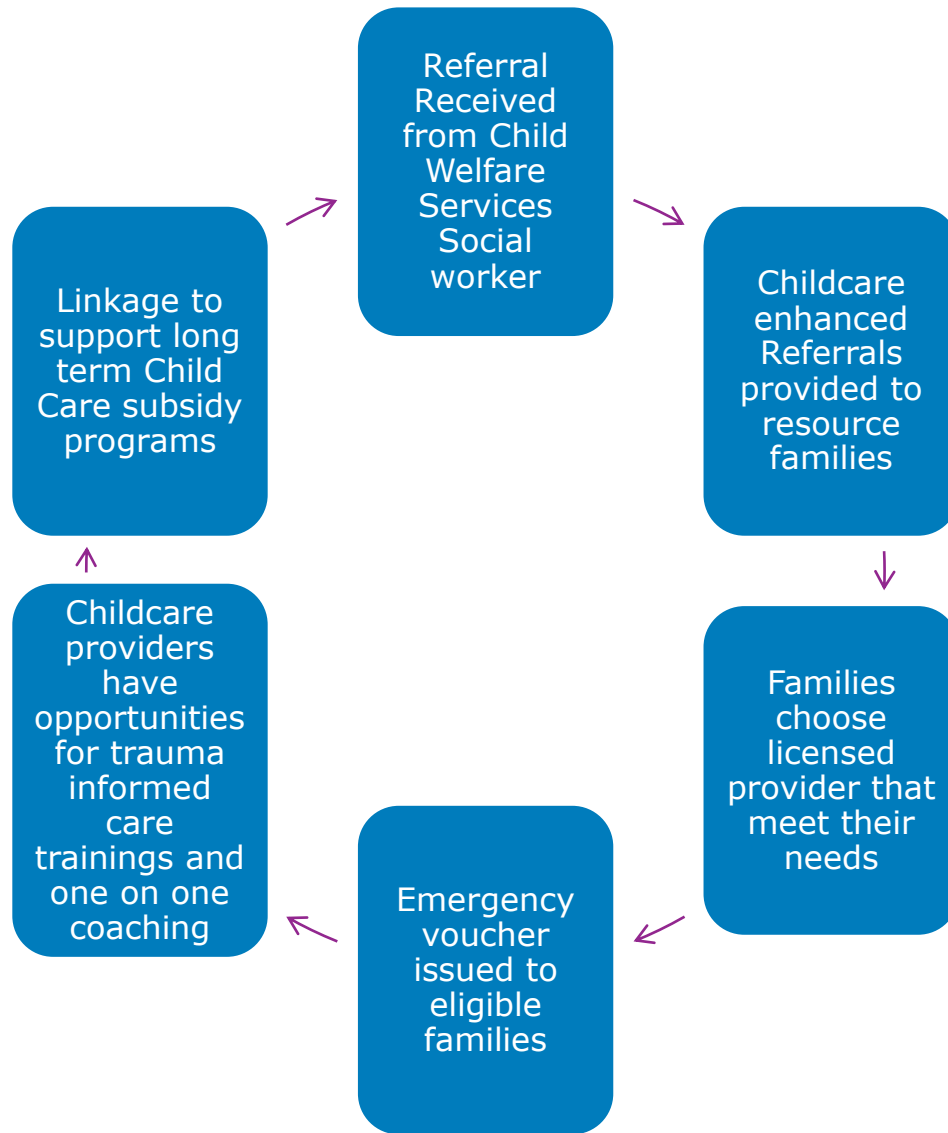


Referrals are received only from Child Welfare Social workers

Serve children ages 0-5 or/and 6-12 with special needs

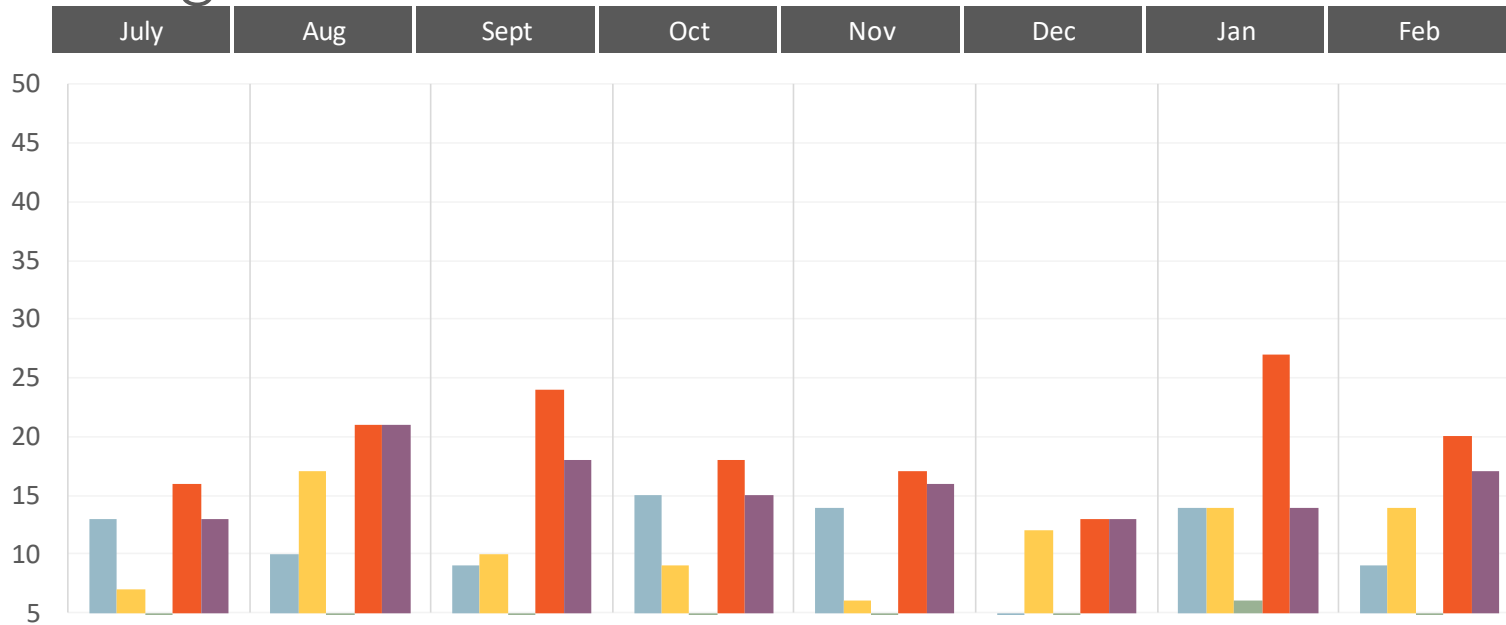
Resource caregiver must be working or looking for employment

Cycle of our Support Services



Referral Trends

Bridge Navigation Referral Trends 2018-2019



Age	July	Aug	Sept	Oct	Nov	Dec	Jan	Feb	Total
Birth-24 months	13.00	10.00	9.00	15.00	14.00	4.00	14.00	9.00	88.00
2 through 5	7.00	17.00	10.00	9.00	6.00	12.00	14.00	14.00	89.00
6 through 12	0.00	0.00	0.00	0.00	1.00	0.00	6.00	0.00	7.00
referrals received	16.00	21.00	24.00	18.00	17.00	13.00	27.00	20.00	156.00
Total kids served w/ navigation	20.00	27.00	19.00	24.00	21.00	16.00	34.00	23.00	184.00

Voucher payments and projections 2018-2019

Baseline Projection	
Projections FY1819	
Monthly Average Number of New Children	12
Monthly Average Number of Existing Children	41
Monthly Average Number of Terminated Children	12
Average Cost of Care	\$ 718.78
Total Cost FY1819	\$ 357,873.29

Conservative Projection	
Projections FY1819	
Monthly Average Number of New Children	8
Monthly Average Number of Existing Children	40
Monthly Average Number of Terminated Children	9
Average Cost of Care	\$ 718.78
Total Cost FY1819	\$ 335,676.16

Aggressive Projection	
Projections FY1819	
Monthly Average Number of New Children	16
Monthly Average Number of Existing Children	46
Monthly Average Number of Terminated Children	16
Average Cost of Care	\$ 718.78
Total Cost FY1819	\$ 380,070.43

Emergency Child Care Bridge Program Payment Actuals						
Center-FT Monthly	FCC-FT Monthly	Age	Kids	% of Total	Total Cost	Average Cost of Care
46.4%	53.6%	Birth to 24	174	66%	\$ 134,683.15	\$ 774.04
		2 through 5	88	33%	\$ 51,080.59	\$ 580.46
		6 through 12	1	1%	\$ 115.00	\$ 115.00
			263	100%	\$ 185,878.74	\$ 718.78

Service Actuals		
Average Cost of Care (exclude July)	Average Number of Monthly New (exclude July)	Average Months in Program*
\$ 718.78	16	2.3

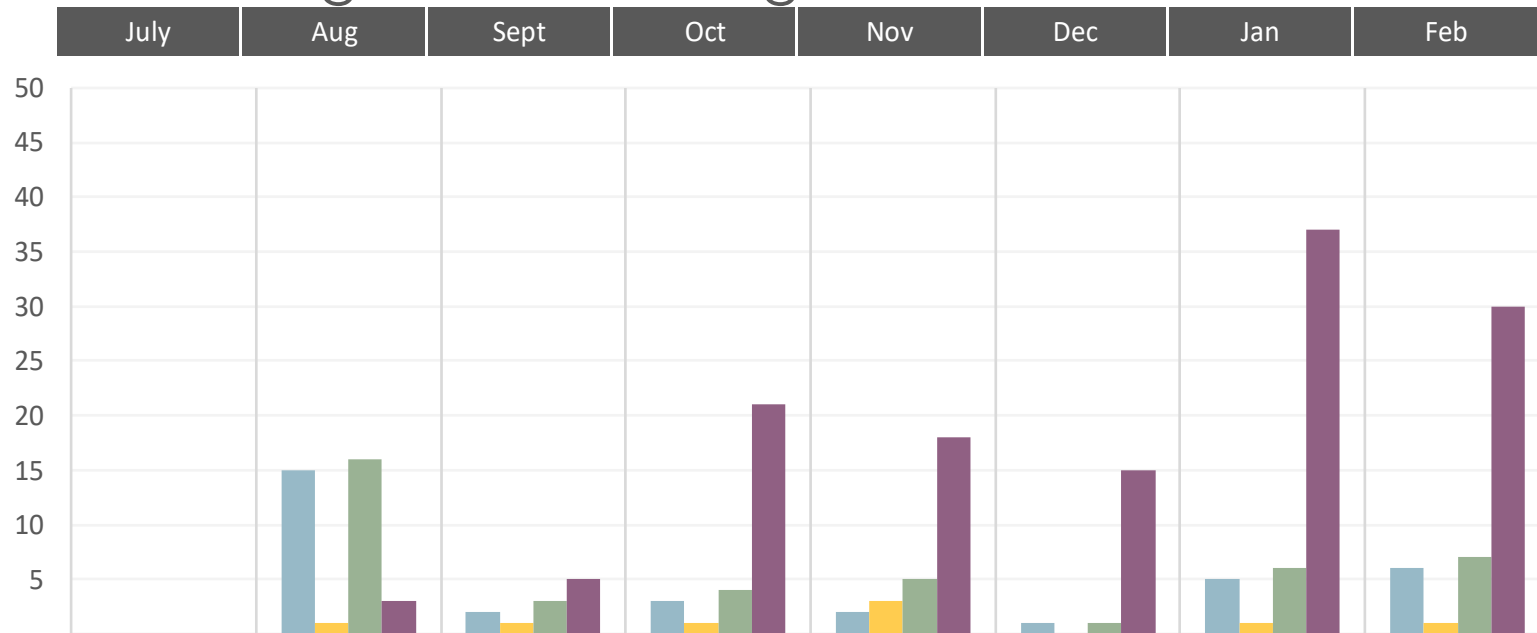
Termination Actuals		
Moved to Subsidized	Moved to Non- Subsidized	Moved to None
73%	0%	27%

*Due to recent increase in CAPP funding, the attrition rate is being artificially inflated thus having an impact on the voucher payments. We are expecting this anomaly to slow around July 2019.

Center/FCC FT Monthly	11/1/2018	12/1/2018	1/1/2019
Center-FT Monthly	50%	47%	49%
FCC-FT Monthly	50%	53%	51%

Age	11/1/2018	12/1/2018	1/1/2019
Birth to 24	29 (60.4%)	27 (62.8%)	32 (60.4%)
2 through 5	19 (39.6%)	16 (37.2%)	20 (37.7%)
6 through 12	0 (0.0%)	0 (0.0%)	1 (1.9%)

Bridge TIC Training and Coaching 2018-2019



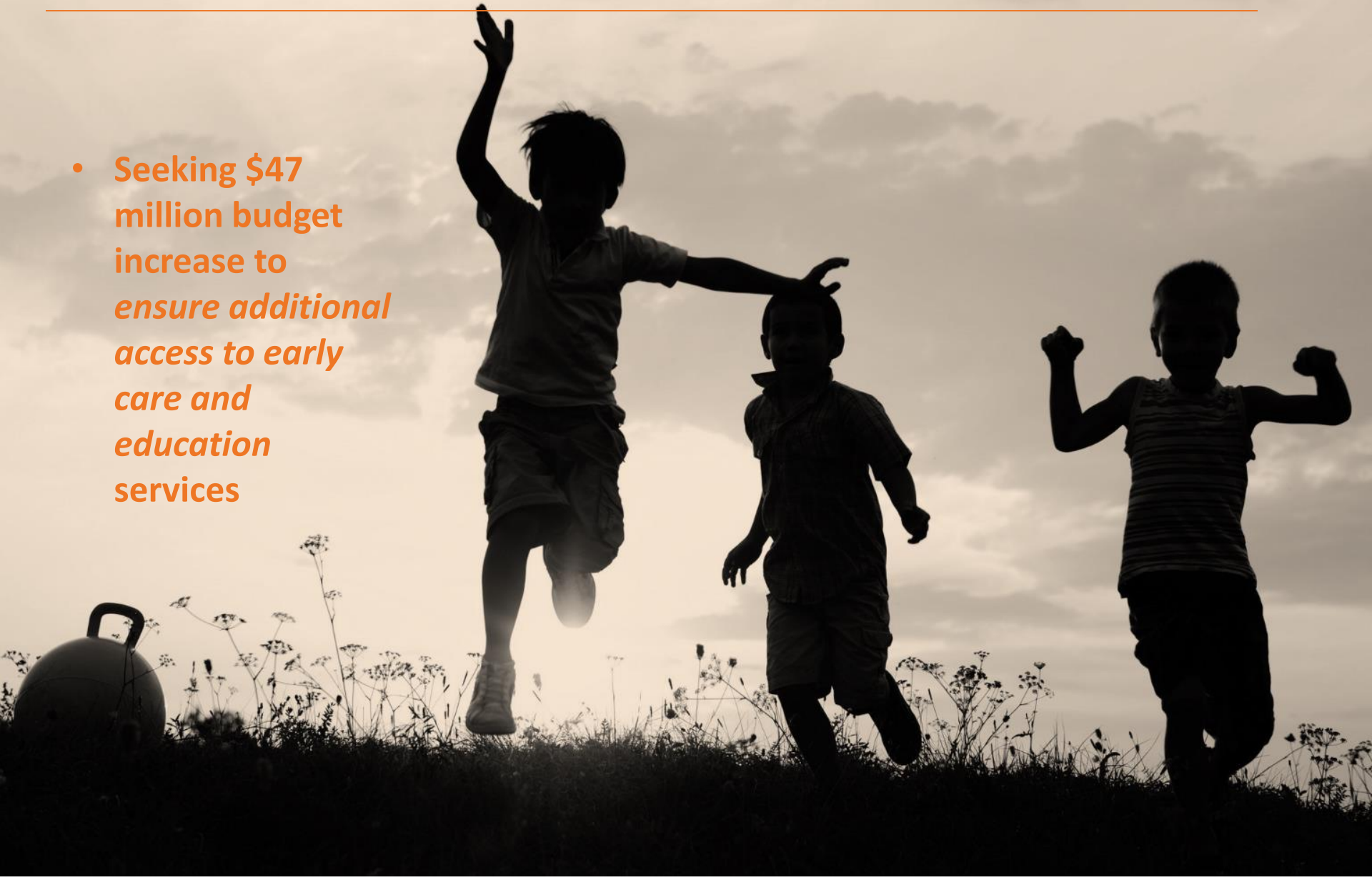
Trainings	July	Aug	Sept	Oct	Nov	Dec	Jan	Feb	Total
# Of Training (English)	0	15	2	3	2	1	5	6	34
# Of training (Spanish)	0	1	1	1	3	0	1	1	8
Total # Of training	0	16	3	4	5	1	6	7	42
number of participants	0	106	36	85	62	19	64	271	643
# of coaching Sessions	0	3	5	21	18	15	37	30	129
# of providers rec'd coaching	0	0	6	19	12	18	36	22	113

Networking and building relationships

- Work collaboratively with our county
- Foster Services Committee members
- Work closely with our CCIP providers (Child Care Initiative project)
- Participate in a variety of other county wide Trauma Informed working team meetings
- Established relationships with our Counties subcontractor ; Grossmont College Foster Adoption and Kinship Care Education Program
- Outreach and provided orientations to Foster Family Agencies, Foster Parent support group meetings, and Quality Parenting Initiative meetings as well as Grandparent raising grandchildren events
- All other R&R related activities

Child Care Bridge - Expansion

- Seeking \$47 million budget increase to *ensure additional access to early care and education services*



Questions?

- PowerPoint slides, webinar recording, and a certification of participation will be posted at www.kids-alliance.org/webinars

